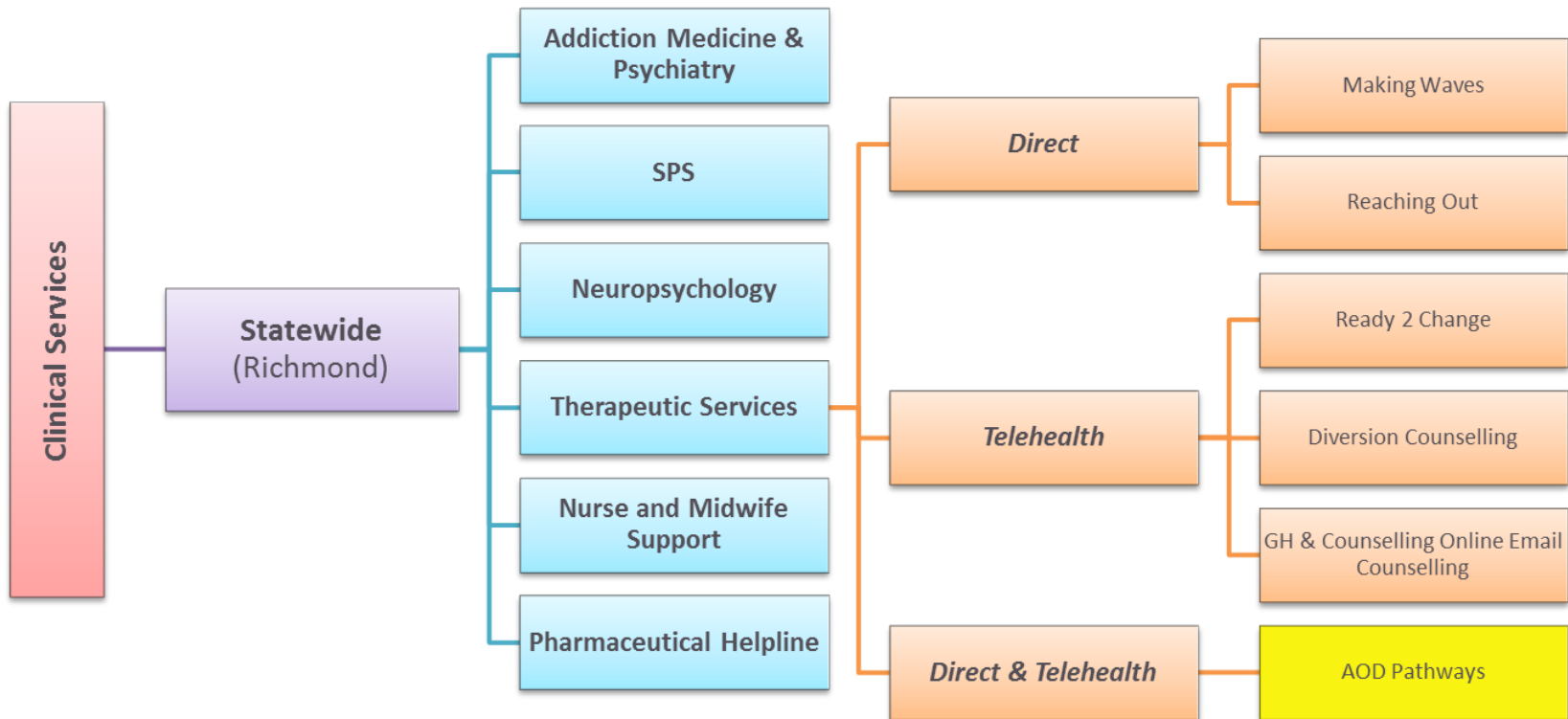




Sally Thomas, Sophia Cotroneo

# Specialist Clinical Services



## What is AOD Pathways?

- State-wide service delivered by phone or face-to-face
- Working with people experiencing difficulty accessing AOD services
- Offer brief intervention, case management and family support
- Aim to link clients with appropriate local supports



## Who is eligible?

- Problematic substance use
- Complex/multiple needs in addition to problematic substance use
- Previous attempts to seek and access treatment at local AOD services



## Who can refer?

- Catchment based intake services
- AOD assessment and treatment services
- DirectLine, Family Drug Help, YoDAA General Practitioners
- Other primary and specialist health services
- Self-referrals (including carers, families and significant others)



## Why should I refer?

- Individuals who experience problematic AOD use as well as other complex needs often have difficulty accessing treatment
- We can assist not only the individual but also their family and friends



## How do I refer?

- 1800 319 619
- [AODpathways@turningpoint.org.au](mailto:AODpathways@turningpoint.org.au)
- [www.directline.org.au/aod-pathways](http://www.directline.org.au/aod-pathways)

We are available Monday to Friday between 9am to 5pm. All after hours support is available via DirectLine



## For more information...

- If you have further questions please call
- AOD Pathways PH: **1800 319 619**
- e: [AODpathways@turningpoint.org.au](mailto:AODpathways@turningpoint.org.au)
- AOD service finder:
- [www.directline.org.au/service-finder](http://www.directline.org.au/service-finder)

